



## EXTREME-PRESSURE LUBRICANT WITH POLAR BONDING CAPABILITY

Works even under heavy loads and high temperatures. Actually polar bonds to the metal surface and will not sling off. **SpeedX** penetrates fast into bearings and fittings.

Oils normally used for lubrication are displaced by moisture and their effectiveness is lost. Even under the best circumstances, they don't last very long. Not so with **SpeedX**. It hugs metal like a magnet. **SpeedX** displaces

moisture and maintains a fantastic lubricating capability.

Use **SpeedX** for remarkable lubrication of:

- In-line Skates
- Skateboards
- Roller Skates
- Bicycles Gears, Derailleurs
- Luges
- Chains and Bearings
- Other Sports Equipment



**SpeedX** is not only a superb lubricant. It gives long lasting, heat-resistant lubrication, decreases wear and extends the lifespan of treated items. Contains EP additive, so the more load you apply to a bearing, the **LESS** friction! Skateboards, roller skates, chains and derailleurs operate smoother, quieter, with greater efficiency and last longer when treated with **SpeedX**.

For more product info and videos see:  
[www.corrosionx.org](http://www.corrosionx.org) [www.corrosionx.com.au](http://www.corrosionx.com.au)

**CORROSIONX**  
When Corrosion Protection is MISSION CRITICAL





**When it's  
mission  
critical**

Dulux Auckland laboratory  
constant salt spray test  
according to industry  
standard ASTM B-117.  
Pics taken after 72 hrs.  
Download the entire  
test report from

[www.corrosionx.org](http://www.corrosionx.org) and  
[www.corrosionx.com.au](http://www.corrosionx.com.au)



CorrosionX XD Xtended Duty



ReelX



SpeedX



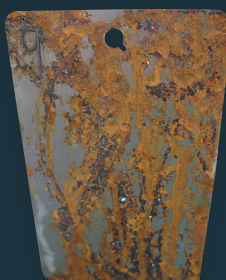
Rock'n Roll



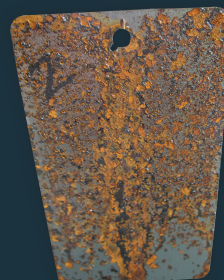
Muc Off Wet Lube



Muc Off Hydro Dynamic



INOX Chukka Chain Lube MX9



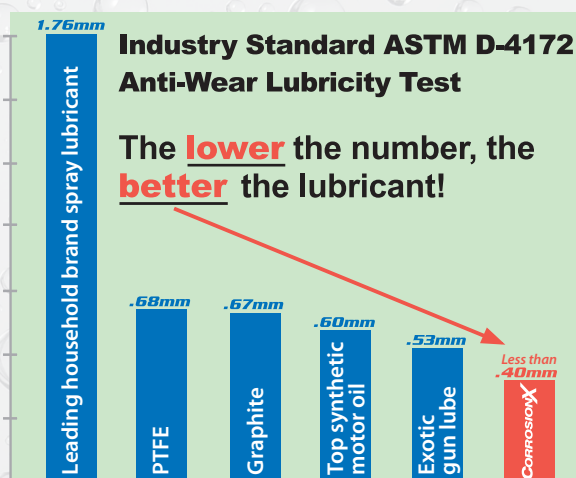
Finish Line Bike Chain Lube



Squirt

## FACT SHEET

ReelX and SpeedX are a little different. We start with the same core CorrosionX formula, but to that we add an exotic EP additive. ReelX has a little bit. SpeedX has more. This additive, when activated by the heat energy of friction (triboenergy) modified metal and metal oxide wear surfaces – making them smoother. The best analogy I have to give you is that under load, the surfaces become “reconditioned” finer than any human machining process. So the result is that metal surfaces treated with these two products react the opposite from what nature intends. Nature says, the more load the more friction and therefore the more likely to seize a bearing. Use SpeedX and the opposite happen: Apply MORE load and get LESS friction! Now



the bearing wants to spin instead of seize. So as low of a lubrication factor as CorrosionX is, SpeedX is even lower! It's actually the coolest lubricant we make!



For more product info and videos see:  
[www.corrosionx.org](http://www.corrosionx.org)

**CORROSIONX**  
When Corrosion Protection is MISSION CRITICAL